

encl  
01.05.18

Hon. R. Mitchell

Consideration of the Estimates  
Health PEI

## Department of Health and Wellness:

Response to Health PEI Budget Estimate Question:  
interoperative Electronic Health Record (iEHR)

Spring 2018

On April 26, 2018, during Consideration of the Estimates for Health PEI, requests were made for additional information related Health PEI's interoperative Electronic Health Record, including details related to its various components.

**Response:**

An interoperative Electronic Health Record (iEHR) is also commonly referred to simply as an Electronic Health Record (or EHR).

Prince Edward Island is working with federal and provincial governments, as well as other stakeholders to evolve integrated Electronic Health Records (EHR) across the province.

An EHR is a secure, integrated and comprehensive view of a person's health information generated by their interactions with the health care system. This information is available to authorized healthcare providers when and where they need it, increasing the quality and safety of care received by every Islander accessing the health system.

This important initiative supports Health PEI's goal of "One Island Health System", as well as the long-term sustainability of health care delivery on Prince Edward Island.

What are the parts of the EHR?

The major installed components of the province's EHR are:

- **Clinical Information System (CIS)** – The cornerstone of the province's EHR, the CIS provides seamless, real-time exchange of clinical information between all Island hospitals. It was launched in 2008 and was completed in March 2011.
- **Computerized Provider Order Entry (CPOE)** – A robust order management system which allows clinicians in all Island hospitals to electronically process various types of orders. Electronic ordering has been implemented province-wide for laboratory, diagnostic imaging and allied health consult orders. CPOE enables faster, more efficient, and safer care for Islanders.
- **Drug Information System (DIS)** – The first of its kind in Canada, our province's DIS contains information relating to medications prescribed for Islanders and provides Island pharmacists and other authorized health care providers with province-wide access to medication profiles.
- **Picture Archive and Communication System (PACS)** – PACS enables the digital capture, storage and distribution of medical images. A diagnostic image such as an x-ray can be captured and shared in real-time with authorized health care providers across the province.
- **Radiology Information System (RIS)** – RIS manages all diagnostic imaging-related patient information across PEI. An x-ray taken at one of our community hospitals, for example, can be interpreted by a radiologist either locally or remotely and as soon as she/he finishes the report, it is immediately available electronically to all authorized healthcare providers across PEI.
- **Client Registry (CR)** – CR serves as the definitive source of patient/client demographic and administrative information. CR shares this information with other components of the EHR as needed.

emol

01-05-18

Hon. R. Mitchell

Consideration of the Estimates  
Health PEI

## Department of Health and Wellness:

### Response to Health PEI Budget Estimate Question: Family Physicians Participating in Hospital Call Groups

Spring 2018

On April 27, 2018, during Consideration of the Estimates for Health PEI, a question was asked regarding the number of family physicians (also referred to as General Practitioners or 'GPs') participating in hospital rounds or on-call.

**Response:**

As provided for in the Master Agreement, there are family physicians who participate in hospital 'call groups'. Outlined below is the list of call groups for each hospital, including the number of family physicians who participate in each call group.

West Prince Region

Community Hospital O'Leary:

- 1 physician

Western Hospital:

- 1 call group of 3 physicians

East Prince Region

Prince County Hospital:

- 1 call group of 6 physicians
- 1 call group of 7 physicians

Queens County

Queen Elizabeth Hospital:

- 5 call groups of 3 physicians
- 1 call group of 4 physicians
- 1 call group of 5 physicians

Kings County

Kings County Memorial Hospital:

- 1 call group of 7 physicians

Souris Hospital:

- 1 call group of 4 physicians

emol  
01-05-18  
Hon. R. Mitchell  
Consideration of the  
Estimates  
Health PEI

## Department of Health and Wellness:

### Response to Health PEI Budget Estimate Question: Health PEI Organizational Charts and Staffing Complements

Spring 2018

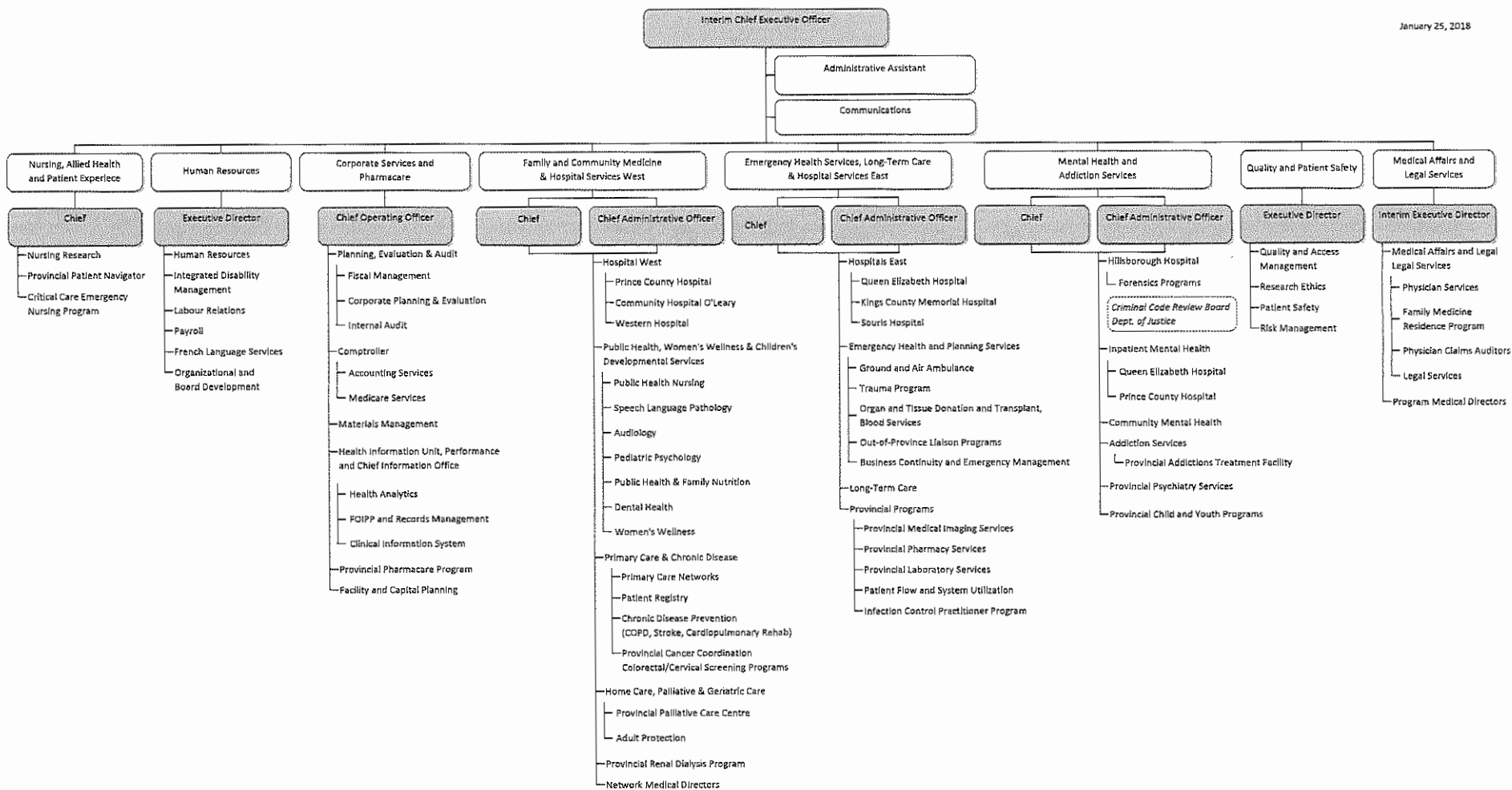
On April 26, 2018, during Consideration of the Estimates for Health PEI, requests were made for additional information related Health PEI's organizational charts and staffing complement.

**Response:**

Attached are copies of Health PEI's organizational charts, as well as a table outlining Health PEI's staffing complement by division and union groups.

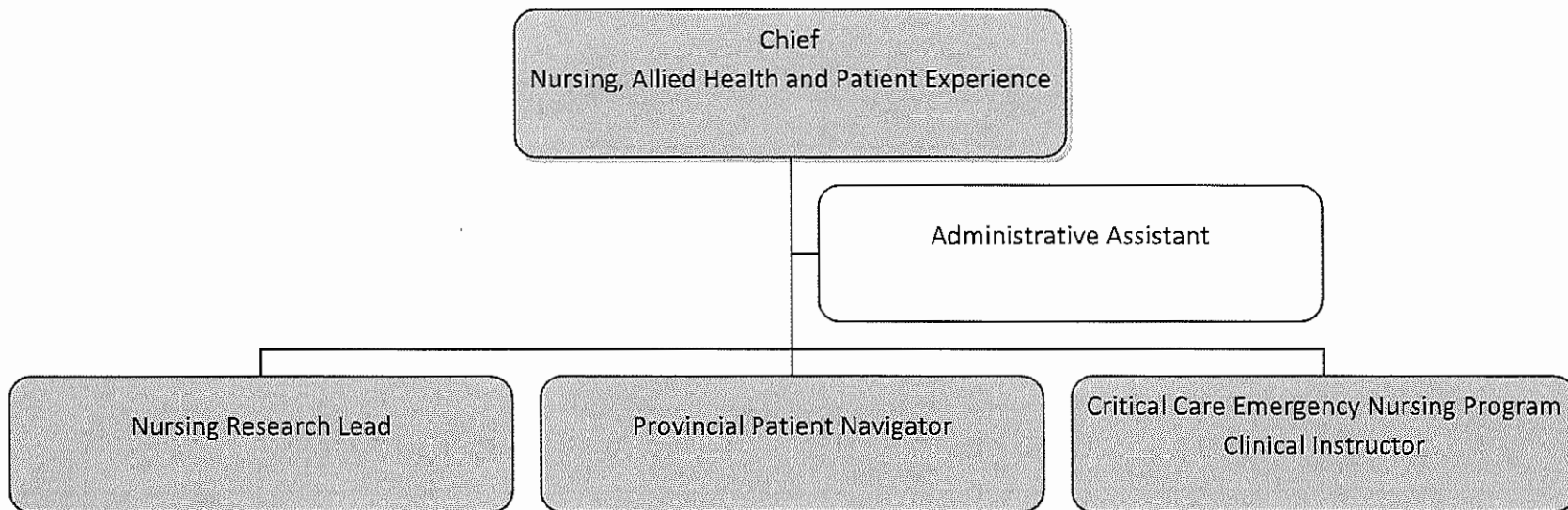
# Health PEI - Office of the Chief Executive Officer

January 25, 2018



# Health PEI - Nursing, Allied Health and Patient Experience

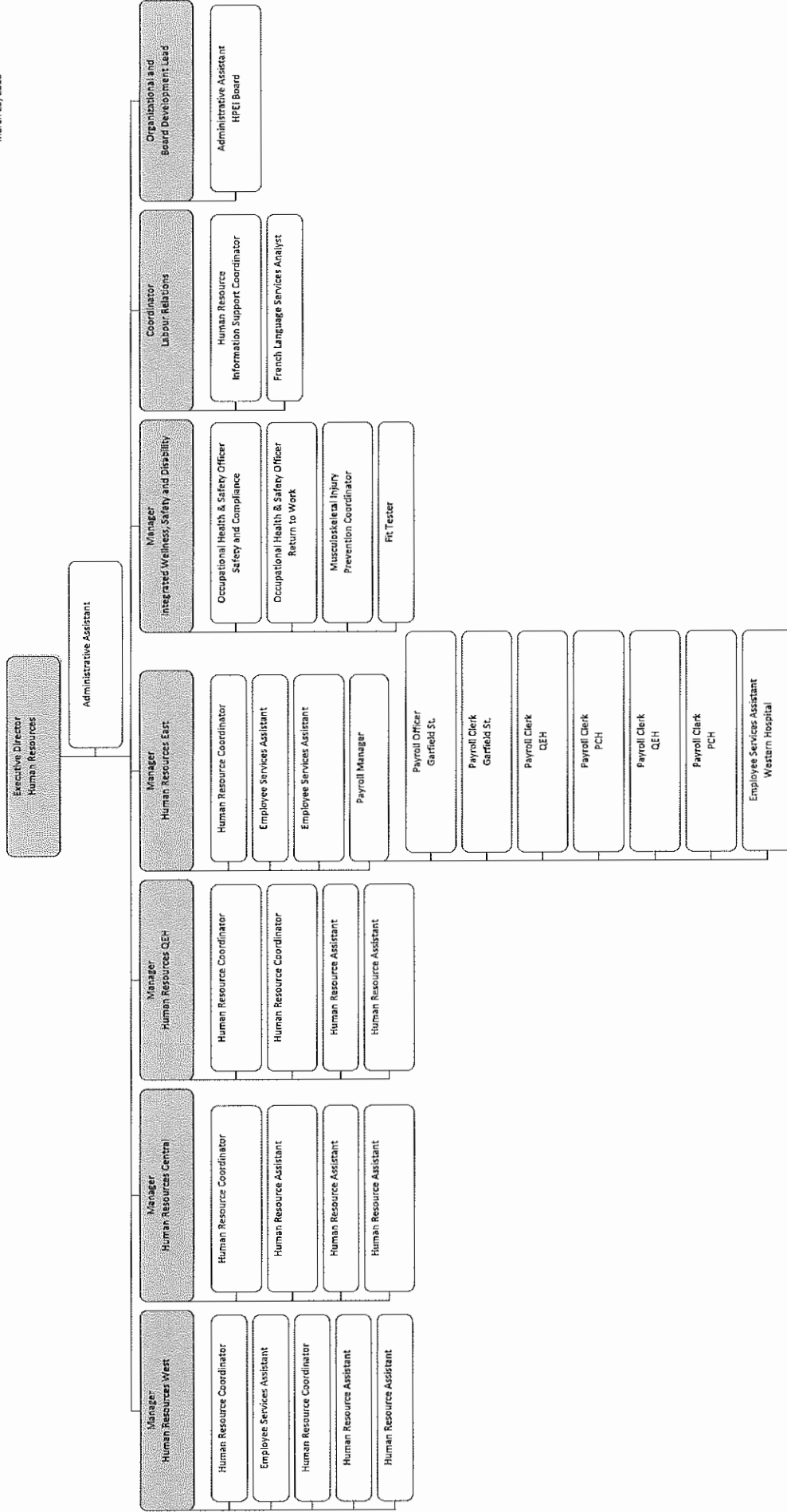
March 23, 2018 Updated





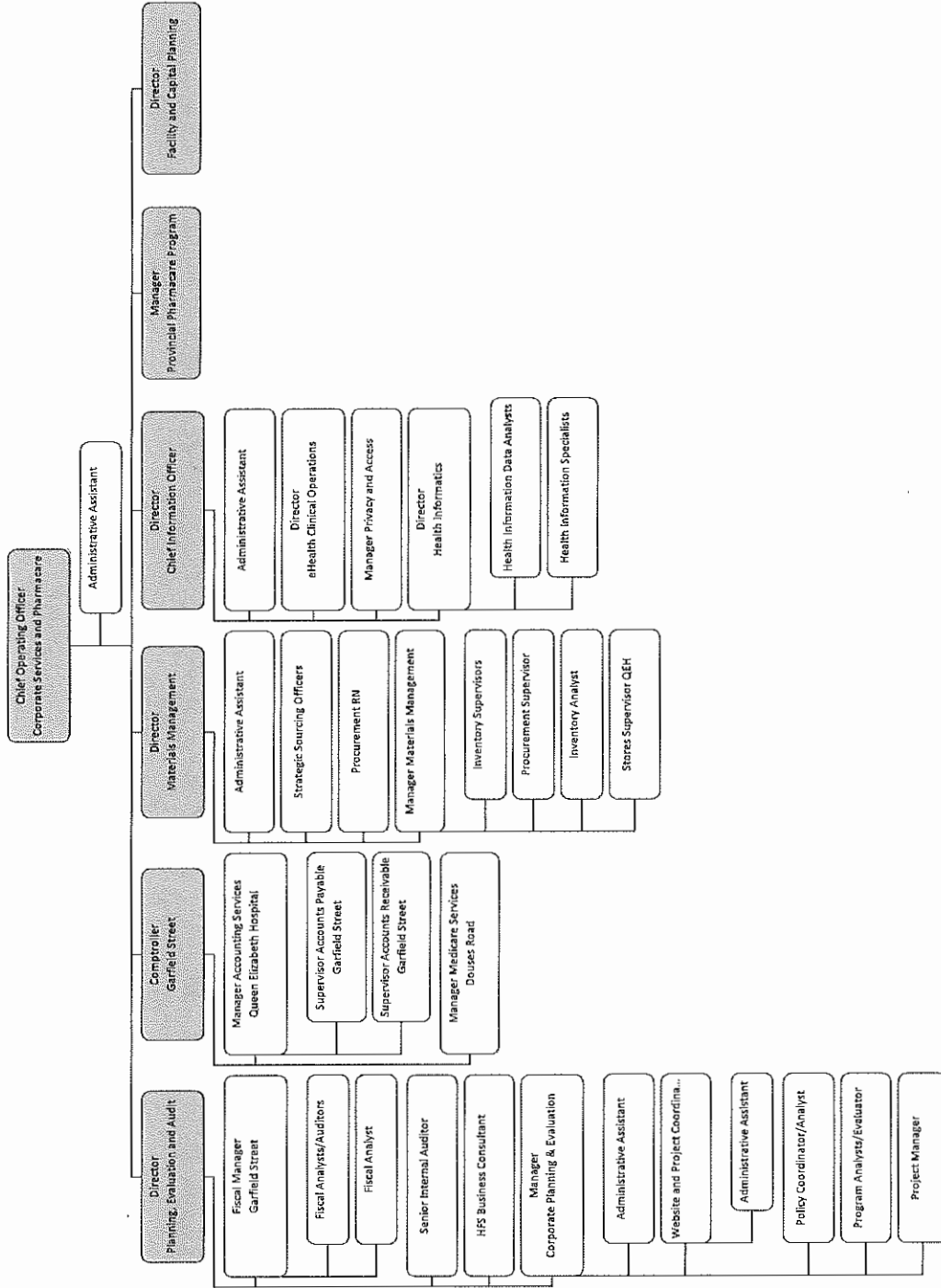
# Health PEI - Human Resources

March 23, 2018



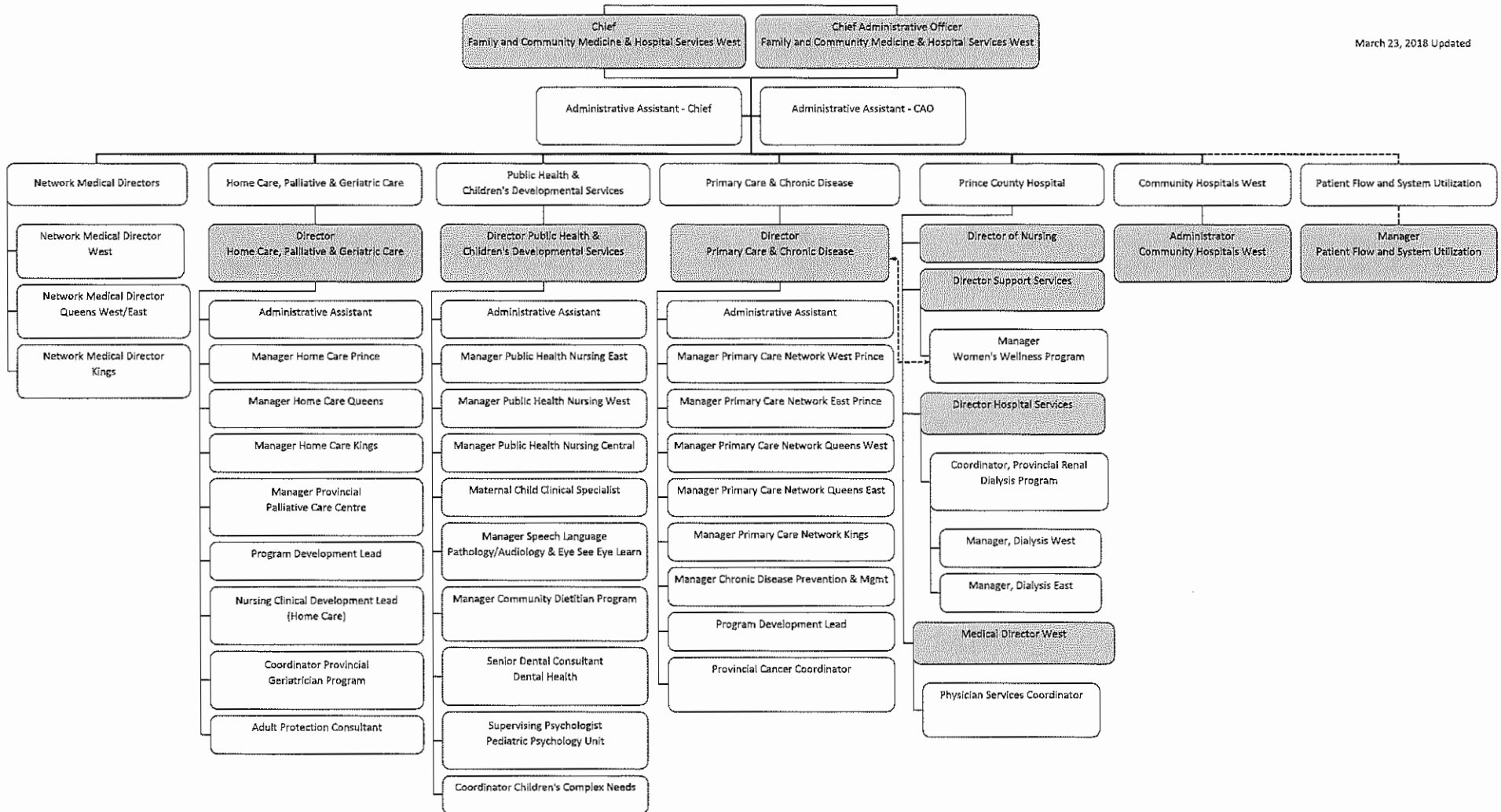
# Health PEI - Corporate Services and Pharmacare

March 23, 2018 Update



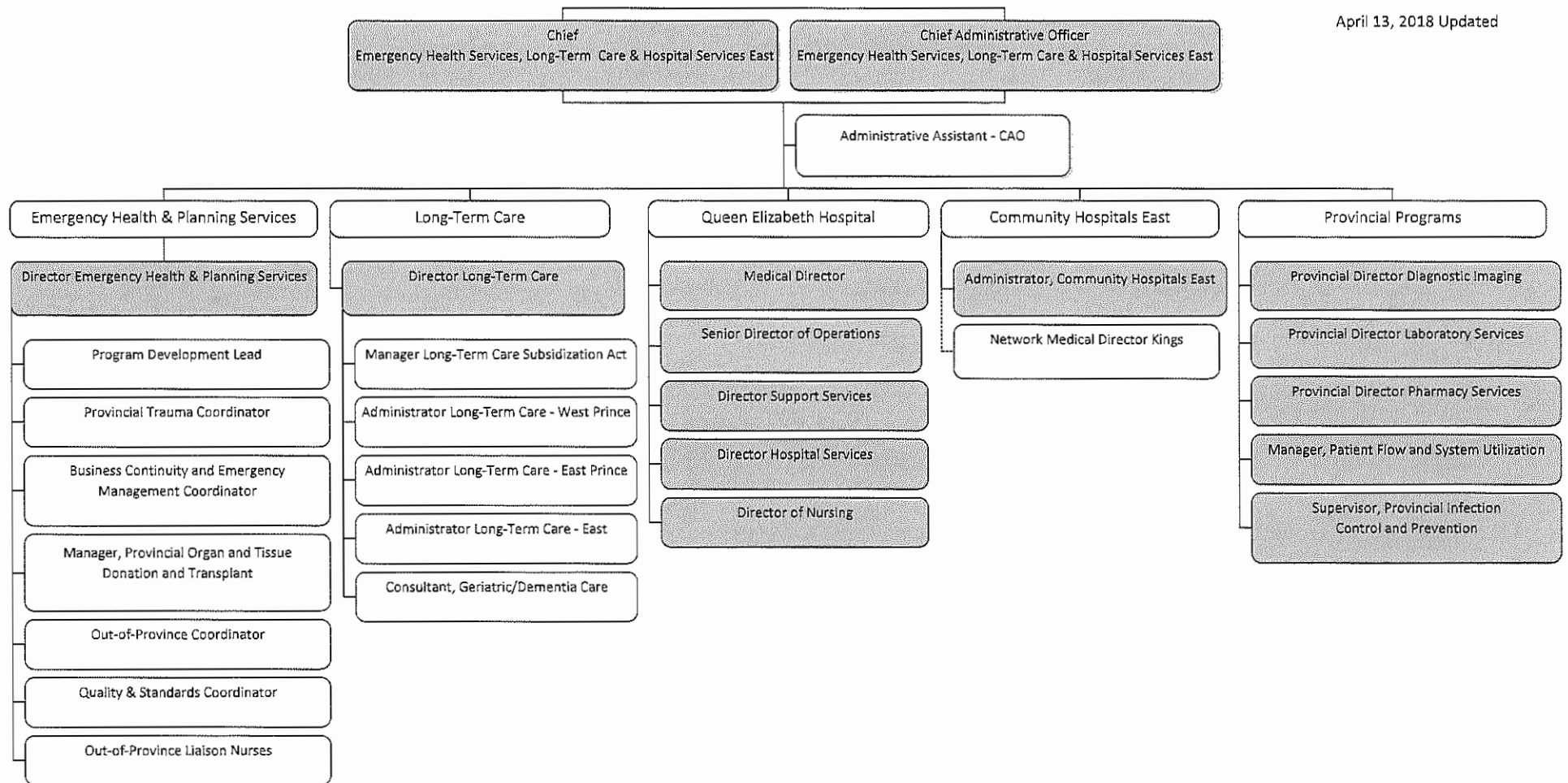
# Health PEI - Family and Community Medicine and Hospital Services West

March 23, 2018 Updated



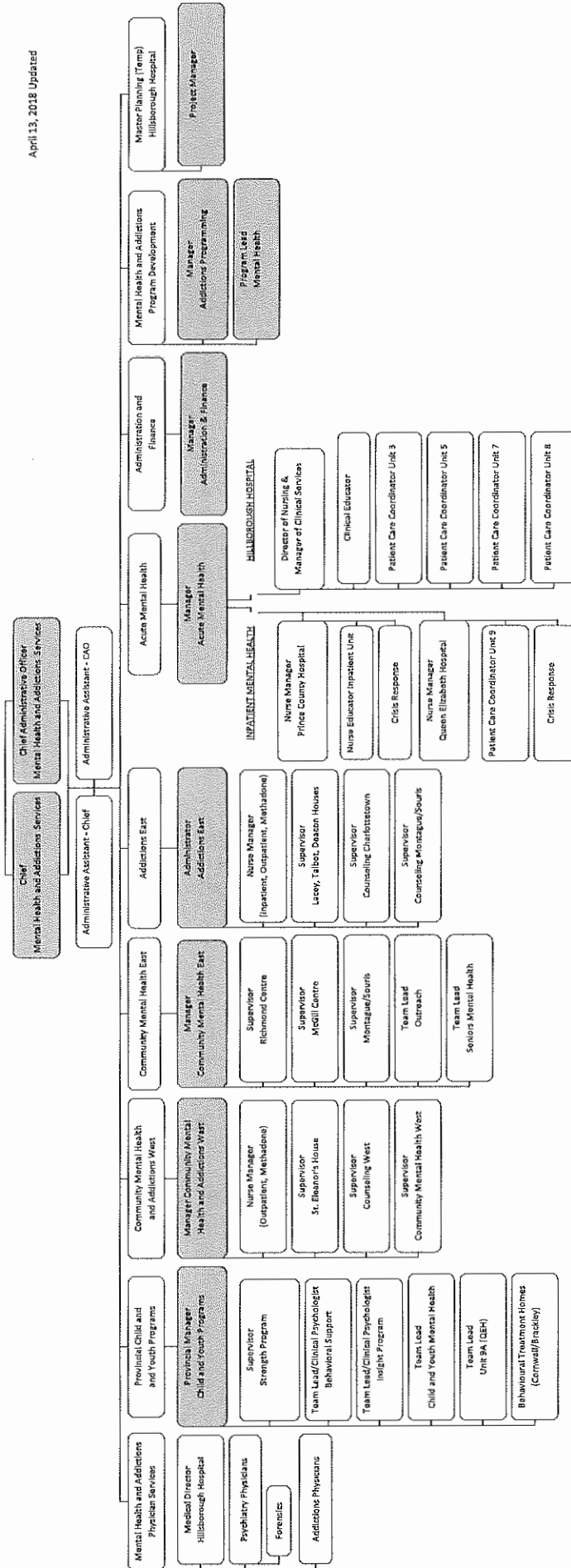
# Health PEI - Emergency Health Services, Long-Term Care, and Hospital Services East

April 13, 2018 Updated



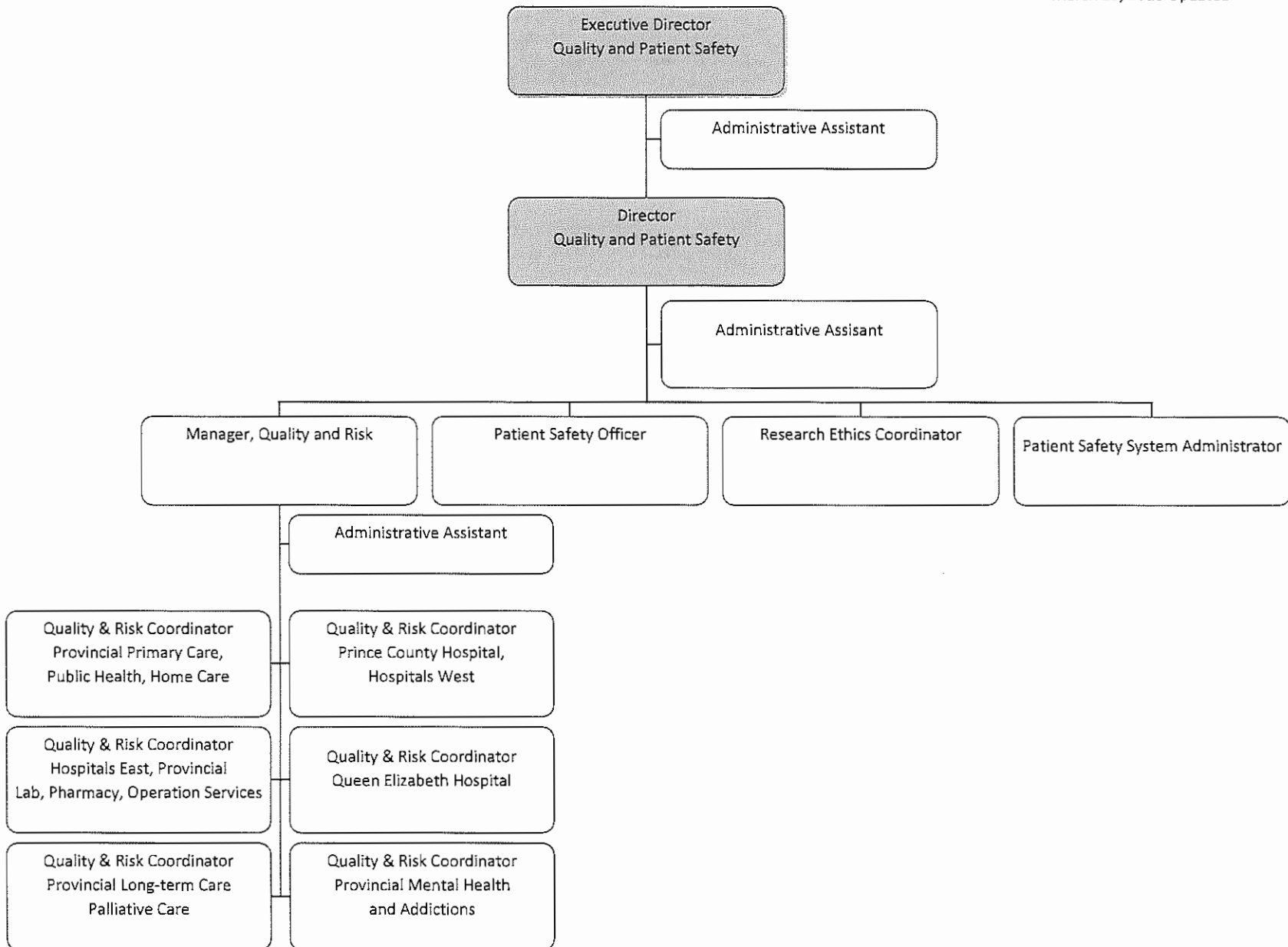
# Health PEI - Mental Health and Addictions Services

April 13, 2018 Updated



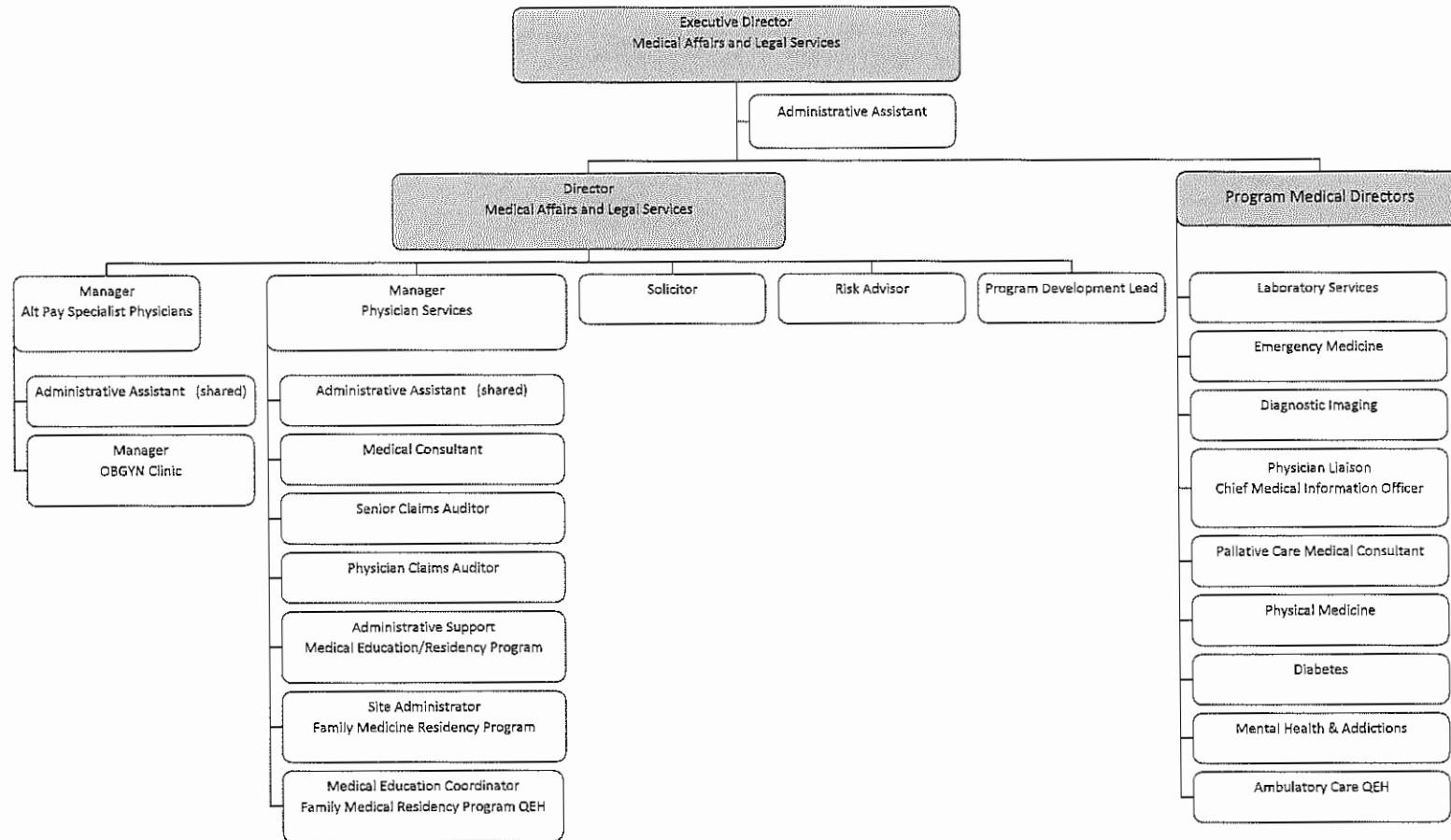
# Health PEI - Quality and Patient Safety

March 23, 2018 Updated



# Health PEI - Medical Affairs and Legal Services

March 23, 2018 Updated



Medical Education Program

NOTE: Reports to Dalhousie Family  
Medicine Program. Funding for the  
position is provided by HPEI

HEALTH PEI  
2018-19 EMPLOYEE FULL-EIM EQUIVALENTS (as of March 16, 2018)

	Excluded	CUPE	PEINU	IUOE	UPSE	Physicians <sup>1</sup>	Total
<b>Corporate Services and Pharmacare</b>							
Corporate Services	11.00	-	-	1.00	-	-	12.00
Financial Services	15.00	0.10	1.00	66.55	-	-	82.65
Health Infomatics	4.00	-	-	3.00	8.50	-	15.50
Interoperative Electronic Health Record	1.00	-	4.00	10.60	7.50	-	23.10
Pharmacare	1.00	-	-	11.00	5.00	-	17.00
<b>Total Corporate Services and Pharmacare</b>	<b>32.00</b>	<b>0.10</b>	<b>5.00</b>	<b>92.15</b>	<b>21.00</b>	<b>-</b>	<b>150.25</b>
<b>Medical Affairs</b>							
General Administration	8.73	-	-	3.00	1.00	3.20	15.93
In Province Physician Services	2.96	-	-	4.00	5.00	114.78	126.75
Out of Province Health Services	-	-	3.80	1.00	-	-	4.80
<b>Total Medical Affairs</b>	<b>11.69</b>	<b>-</b>	<b>3.80</b>	<b>8.00</b>	<b>6.00</b>	<b>117.98</b>	<b>147.48</b>
<b>EHS, LTC and Hospital Services East</b>							
Queen Elizabeth Hospital	40.00	280.51	381.32	206.86	150.05	-	1,058.74
Community Hospitals - East	6.00	43.15	36.40	14.53	27.20	-	127.28
Provincial Clinical Services	9.80	5.10	2.60	239.62	29.43	-	286.55
Ambulance and Blood Services	1.00	-	1.80	1.00	1.00	-	4.80
Long Term Care (Provincial Homes & Manors)	21.00	187.39	72.85	44.20	459.50	-	784.94
<b>Total EHS, LTC and Hospital Services East</b>	<b>77.80</b>	<b>516.15</b>	<b>494.97</b>	<b>506.21</b>	<b>667.18</b>	<b>-</b>	<b>2,262.31</b>
<b>Family and Community Medicine and Hospital Services West</b>							
Prince County Hospital	18.00	78.59	166.06	67.84	44.69	-	375.18
Community Hospitals - West	5.00	32.80	24.30	13.32	22.60	-	98.02
Renal Care Services	1.60	-	32.60	6.10	14.12	-	64.42
Primary Health Care	12.00	-	49.87	38.45	35.95	-	136.27
Chronic Disease Management	1.00	-	3.00	5.20	3.58	-	12.78
Public Health	4.00	1.00	39.20	20.70	25.20	-	90.10
Provincial Dental Programs	3.00	-	-	1.00	20.00	-	24.00
Home Care, Palliative and Geriatric Care	6.00	5.70	62.40	27.08	113.30	-	214.48
<b>Total Family and Community Medicine and Hospital Services West</b>	<b>50.60</b>	<b>118.09</b>	<b>377.43</b>	<b>179.69</b>	<b>279.44</b>	<b>-</b>	<b>1,005.25</b>
<b>Mental Health and Addictions Services</b>							
Acute Mental Health	5.00	31.90	48.40	20.90	83.41	-	189.61
Community Mental Health	4.00	-	31.10	19.60	60.90	-	115.60
Addiction Services	2.00	7.50	20.90	8.50	90.30	-	129.20
<b>Total Mental Health and Addictions Services</b>	<b>11.00</b>	<b>39.40</b>	<b>100.40</b>	<b>49.00</b>	<b>234.61</b>	<b>-</b>	<b>434.41</b>
<b>Nursing, Allied Health and Patient Experience</b>	<b>2.00</b>	<b>-</b>	<b>1.00</b>	<b>-</b>	<b>1.00</b>	<b>-</b>	<b>4.00</b>
<b>Human Resources</b>	<b>27.00</b>	<b>-</b>	<b>-</b>	<b>8.00</b>	<b>4.00</b>	<b>-</b>	<b>39.00</b>
<b>Quality and Safety</b>	<b>4.00</b>	<b>-</b>	<b>-</b>	<b>3.70</b>	<b>7.00</b>	<b>-</b>	<b>14.70</b>
<b>Total Health PEI</b>	<b>216.09</b>	<b>673.74</b>	<b>982.60</b>	<b>846.75</b>	<b>1,220.23</b>	<b>117.98</b>	<b>4,057.40</b>

Physicians<sup>1</sup> - Salaried Physicians only; does not include FFS, Contract or Sessional Physicians

Excluded Group is comprised of management and administrative support employees who have responsibility for confidential personnel management functions and confidential financial planning and analysis functions within Health PEI.



encl

01-05-18

Hon. R. Mitchell

Consideration of the  
Estimates

Health PEI

## Department of Health and Wellness:

Response to Health PEI Budget Estimate Question:  
Provincial Eye Surgical Suite Operating Schedule

Spring 2018

On April 27, 2018, during Consideration of the Estimates for Health PEI, a question was asked regarding the operating schedule for the provincial eye surgical suite.

**Response:**

The provincial eye surgical suite is staffed to operate Monday through Thursday. More specifically, the eye surgical suite is operational:

- Mondays from 8:00am – 3:30pm
- Tuesdays from 8:00am – 3:30pm
- Wednesdays from 8:00am – 3:30pm
- Thursdays\* from 8:00am – 3:30pm

*\*Note: Only one in four Thursdays is booked by the ophthalmologist for surgery.*

On occasion, ophthalmologists have scheduled eye surgeries on Fridays. When this happens, staffing and schedules are adjusted from Thursday to Friday to accommodate the change.

Approximately 12 to 14 cataract surgeries are performed per scheduled surgical day.