

Biggan +

MOTORCYCLE TRAGEDY MOVES WOMAN TO CALL FOR IMPROVED SAFETY FOR MOTORCYCLES

When my husband brought home a motorcycle, I told him I would never get on it. However, after much persuasion I took my first drive. I was hooked!

I enjoyed being able to see things you could never see in a car. I loved the smell of the fields of clover and the fresh cut hay, the wind on my face. We drove the motorcycle for five years, touring the Island, Nova Scotia and New Brunswick.

My husband was a very careful driver and I felt relaxed on the back of the bike.

On September 29, 2015, tragedy hit! Someone did not see us and pulled out in front of us. We had no time to do anything but hit the car.

My husband lost his life in this accident and I was very seriously injured. It will take about a year for a full recovery for me.

My message to vehicle drivers is simple - LOOK ONCE AND THEN LOOK AGAIN.

For motorcycle drivers, wear reflective vests after dark. Take a motorcycle training program and anticipate the moves of drivers around you.

Every driver has a right to be on the roads of PEI so please drive respectfully.

Sheila MacLean
Kinross, PEI

WE ARE NOT INVISIBLE!



Small things can cause injury and even death among riders. Bumps, potholes, road debris, wind and weather, while not critical to most motorists, can be fatal to riders.

NEW RIDERS - When new riders don't have an experienced rider with them, they may slow way down when entering a curve or stopping, or leave their turn signal on long after making the turn. They may ride under the speed limit or swing wide to avoid road hazards or other vehicles. Please be courteous and patient! New riders represent the highest number of injuries and deaths among all riders.

DRIVER DISTRACTIONS - Accidents due to driver distractions are becoming an epidemic. In 3 to 5 seconds at 90 kph your vehicle covers the length of a football field. Turn off your cell phone, and if you need to perform a task which takes your eyes off the road, **PULL OVER!**

CONCENTRATE ON YOUR MOST IMPORTANT TASK - THE SAFE OPERATION OF YOUR VEHICLE!

Sponsored By:

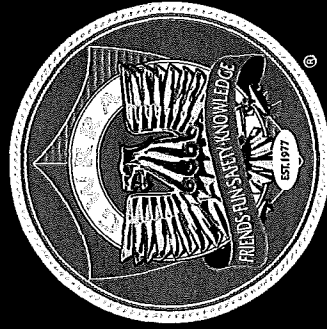
Department of Transportation,
Infrastructure and Energy



Transportation,
Infrastructure and Energy

and

Chapter "A" PEI
GoldWing Road Riders Assoc.

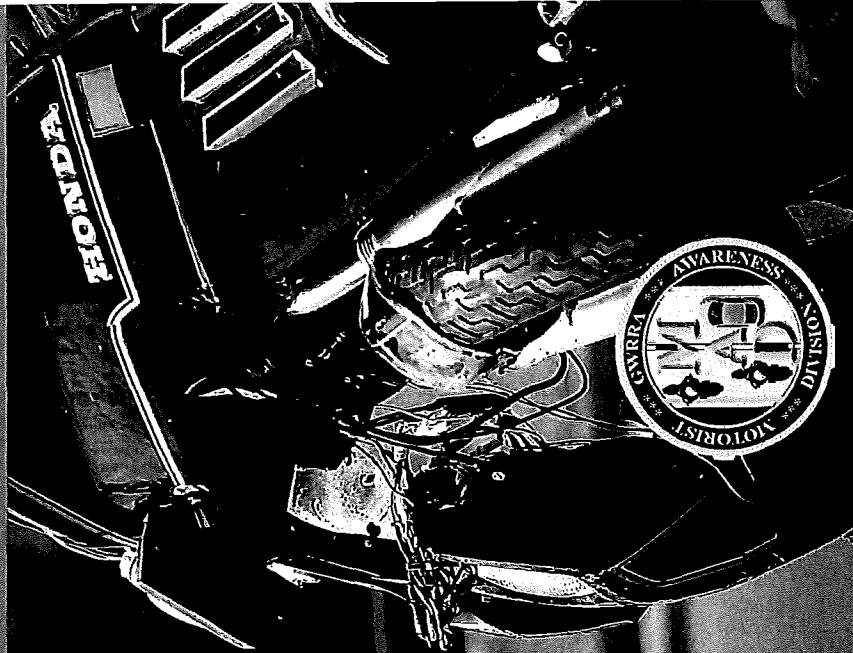


MOTORIST AWARENESS

Gold Wing Road Riders Association

www.gwrra.org

**HELP US SURVIVE
THE RIDE!**



**THERE ARE MORE THAN 10,000
MOTORCYCLE RIDERS ON P.E.I.**

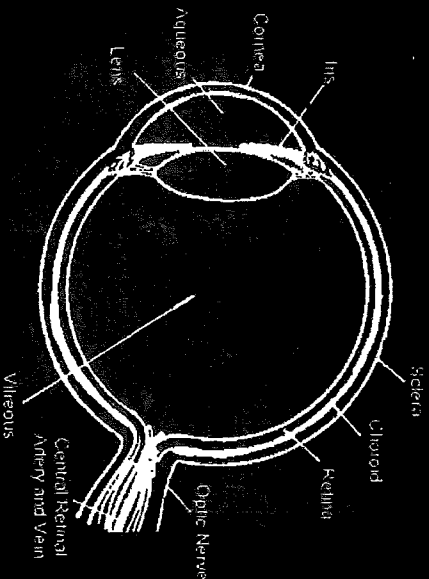
Many of them are invisible because
you don't see them.

Here's how you can make them
visible, and save a life.

LOOK TWICE - SAVE A LIFE!
"THE SCIENCE"

"MORE REASONS TO LOOK TWICE"

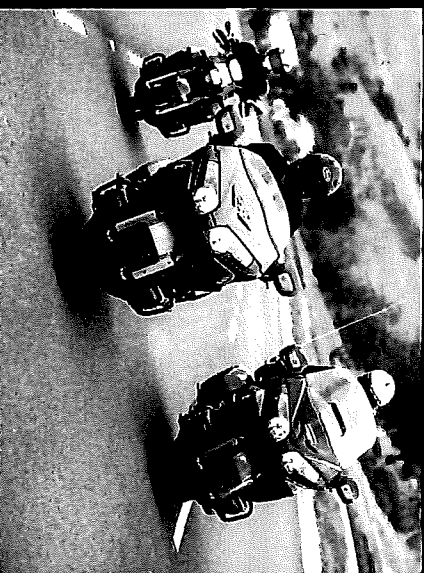
WE ARE NOT INVISIBLE!



**OUR EYES ARE NOT MADE FOR DRIVING -
THEY ARE MADE FOR HUNTING.**

There is a very small part of our eyes that process high definition images. The rest of the image may be fuzzy. This very small high definition image will be processed by your brain as a series of pulses. The pulses are called, "Fixations". The space between pulses are called, "Saccades". If a driver's head moves too quickly left, right, and left again, and the driver is not actively focusing on what he or she sees, a small image like a motorcycle may fall within the fixations and not be processed by the brain at all!

Look left and focus. Continue to focus as you turn your head to the right, focusing nearer and then farther away. Continue to actively focus on images as you turn your head to the left again - looking near and then far. Keep practicing!



- Motorists are not normally looking for motorcycles on the road. They are looking for cars and trucks.
- Motorcycles are smaller than other vehicles which makes judging speed and distance more difficult.
- Because it is smaller, it is easy for a motorcycle to be hidden from view in a vehicle's blind spot, (such as a windshield post) a stationary blind spot, (like a mail box) or even another vehicle.

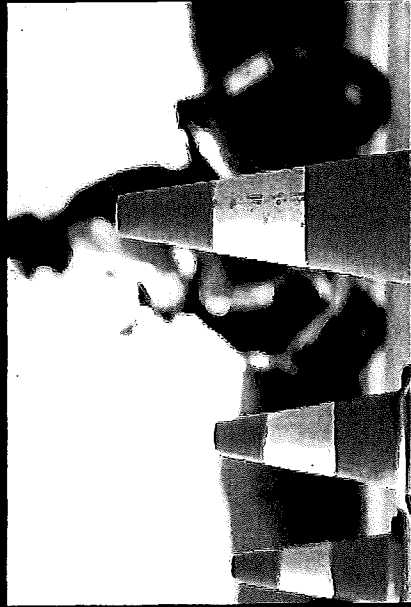
16TR06-44422_green

**MOST ACCIDENTS WITH
MOTORCYCLES CAN BE AVOIDED!**

- **LEFT TURNS AND INTERSECTIONS -**
Over 40% of all motorcycle accidents occur at intersections, especially when a car or truck is making a left turn. Why? Because often a motorist has failed to yield the right of way and turned left in front of a motorcycle. Motorists should be wary of blind spots and actively focus while they are, "looking twice." In multi-lane intersections look for a helmet above the vehicles, and extra tires below.
- **FOLLOWING AT UNSAFE DISTANCES -**
Motorcycles weigh less than cars and trucks, so they are able to stop more quickly and in shorter distances than other vehicles. Put extra distance between you and the bike in front of you to avoid a rear end collision. Follow at 3 seconds or more when road conditions are ideal, and at least 5 seconds when road conditions are bad. Larger vehicles should increase this margin.
- **GROUP RIDERS -**
Motorcyclists often ride in groups. Although riding in small groups is recommended, occasionally the groups are large. If it is necessary to pass a group of riders make ABSOLUTELY CERTAIN that you have a safe place to merge. Remember that motorcyclists have a right to the entire lane!

**DRIVE AWARE!
MOTORCYCLES ARE EVERYWHERE!**

RIDE SAFE!



EDUCATION – There are classes available for both new and advanced riders. Many insurance companies reward riders for taking classes by discounting the cost of insurance. Some associations, like the Gold Wing Road Riders Association, provide their members with riding classes, practice sessions, and seminars.

GOLD WING ROAD RIDERS ASSOCIATION – Membership is open to riders of all motorcycles. Certified instructors provide training for riders and passengers. No cost seminars are available for group and team riding, Road Captain, and many more. Contact GWRRA for more information.

16TR06-44422_yellow

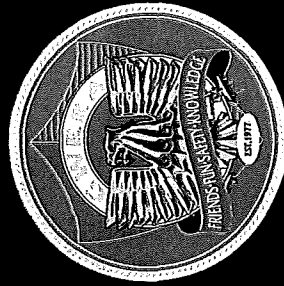
PLEASE RIDE RESPONSIBLY

Sponsored By:

Department of Transportation,
Infrastructure and Energy

and

Chapter "A" PEI
GoldWing Road Riders Assoc.

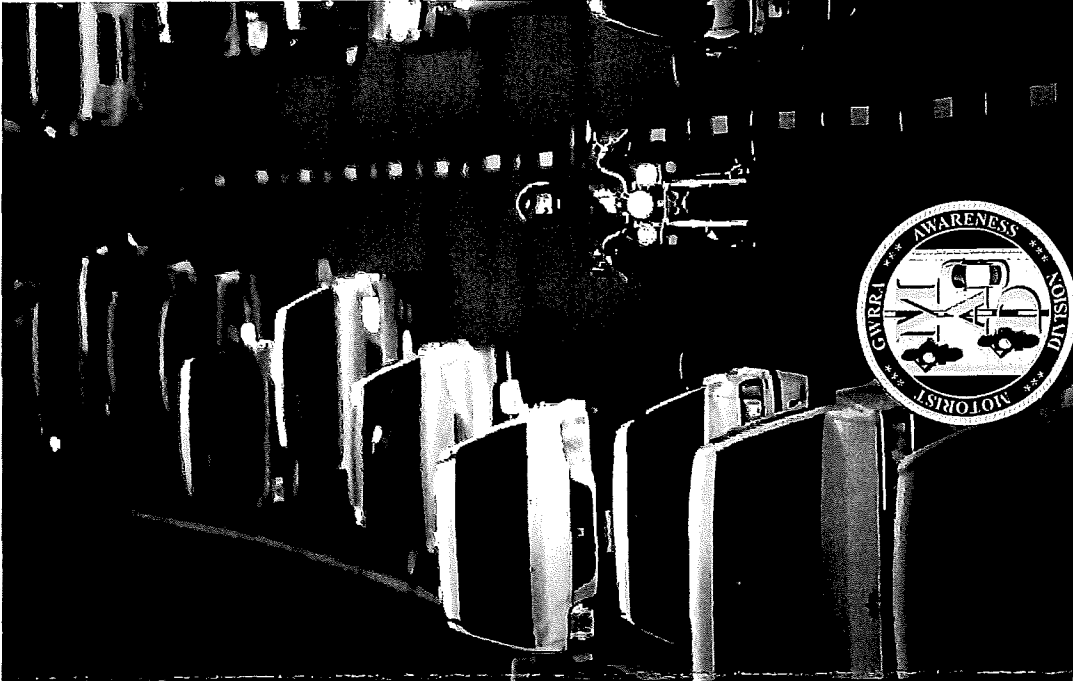


Transportation,
Infrastructure and Energy

MOTORIST AWARENESS

GOLD WING ROAD RIDERS ASSOCIATION

SELF DEFENSE FOR RIDERS



RIDERS ARE DYING TO BE SEEN

Here are some ways to increase your

BE VISIBLE
BE COLORFUL!

LIGHT IT UP

BE NOTICED!

HELP MOTORISTS SEE YOU!

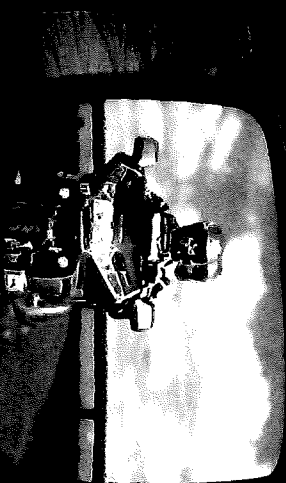
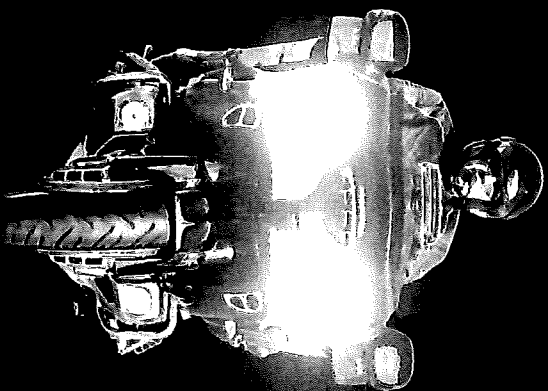


Studies show that silver, white, yellow and high visibility colors are the most visible colors on the road. Black is the most difficult to see, especially at night. Brightly colored jackets, helmets, and riding pants increase your visibility and safety.

- **HEADLIGHTS** – Turn your headlights on high beam during the day. Headlight modulations kits are legal under Canadian Motor Vehicle Safety Standards (CMVSS).

- **BRAKE LIGHTS** – Flash your brake lights several times before you stop. Brake light deceleration devices are available, and they warn motorists that you are preparing to slow down or stop.

- **TURN SIGNALS** – We all know how to use turn signals, but make sure you turn them off after a turn is completed. Motorists don't always know that many motorcycles do NOT have self-canceling turn signals.



LANE POSITIONING IS CRITICAL IN TRAFFIC. MAKE SURE YOU ARE NOT IN A DRIVER'S BLIND SPOT!

- **HORN** – Use it to get attention, but don't rely on it. Some motorcycle horns can't be heard over traffic or stereo systems.

- **LANE POSITIONING** – Position yourself for maximum safety and visibility, and make sure other drivers can see you in their mirrors!

- **GROUPS** – Riding with a group can be safer than riding alone if done correctly. Small groups of 6 to 7 riders are the safest. Impatient motorists may want to pass a group of riders. If the group is too large, merging can become dangerous!

THE MORE LIGHTS ON YOUR MOTORCYCLE, THE MORE VISIBLE YOU ARE - ESPECIALLY AT NIGHT

HOW CAN YOU KEEP US SAFE?



- **LOOK TWICE AND FOCUS**
BEFORE YOU DRIVE INTO AN INTERSECTION
OR CROSS TRAFFIC.
- **GIVE MOTORCYCLISTS
MORE SPACE**
THAN YOU WOULD OTHER VEHICLES –
ESPECIALLY IN BAD WEATHER.
- **BE A COURTEOUS DRIVER.**
- **ELIMINATE DISTRACTIONS.**
DRIVE AWARE! WATCH FOR US!

Please note: In regards to motorcycle registration, the Province of Prince Edward Island requires proof of manufacturer re-certification or an engineer certification of all three-wheeled motorcycles that use two wheels on the rear.

Sponsored By:

Department of Transportation,
Infrastructure and Energy



CANADA

Transportation,
Infrastructure and Energy

and

Chapter "A" PEI
GoldWing Road Riders Assoc.

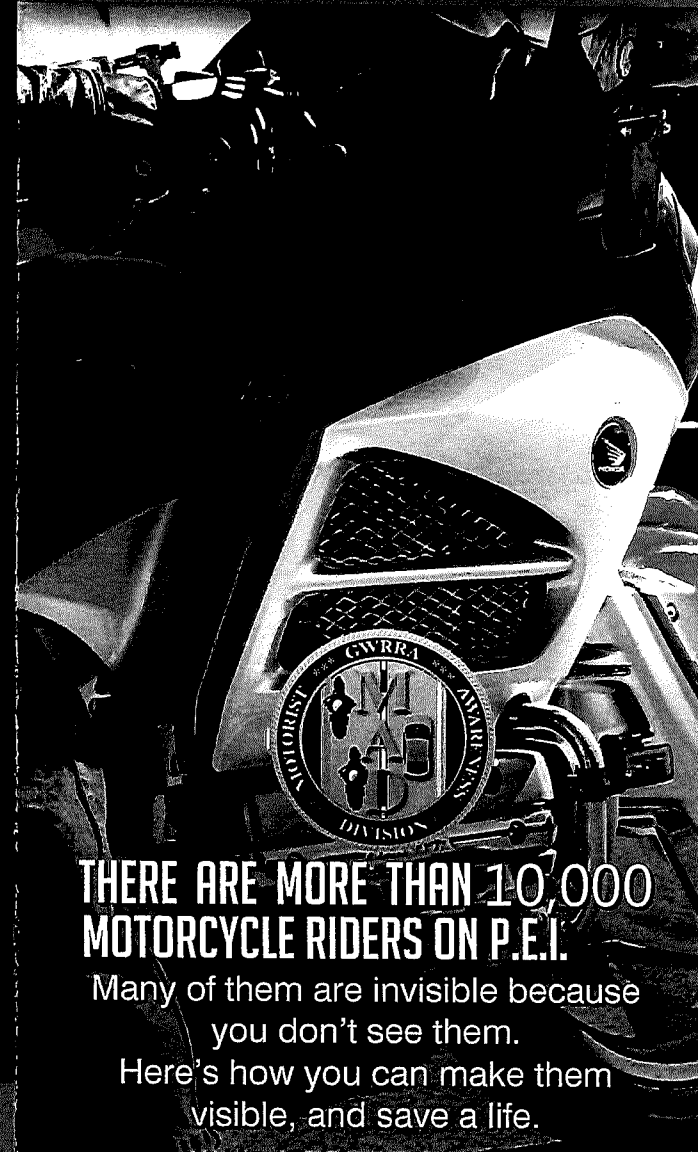


MOTORIST AWARENESS

Gold Wing Road Riders Association

www.gwrra.org

WHO RIDES MOTORCYCLES?



**THERE ARE MORE THAN 10,000
MOTORCYCLE RIDERS ON P.E.I.**

Many of them are invisible because
you don't see them.
Here's how you can make them
visible, and save a life.

WHO RIDES MOTORCYCLES? PEOPLE JUST LIKE YOU!

THERE ARE DIFFERENT TYPES OF MOTORCYCLES

MOTORCYCLE AND MOTORCYCLIST FACTS

MOTORCYCLES

ARE SMALLER AND NARROWER.

THIS MAKES THEM MORE DIFFICULT TO SEE AND TO GAUGE SPEED AND DISTANCE.

A motorcycle may be hidden behind a bush or mailbox. Because of their small size, it is often difficult to determine speed and distance. They are more difficult to see in traffic.

DO NOT HAVE PROTECTIVE EXTERIORS.

Even with proper safety gear, motorcyclists are at a much higher risk of injury.

STOP MORE QUICKLY THAN CARS OR TRUCKS.

Allow at least a 3 second following distance on dry pavement and a 5 second following distance during poor weather conditions.

MANEUVER DIFFERENTLY.

Motorcycles have the right to an entire lane just like cars and trucks, however a motorcycle may only occupy 1.2 meters of a 3.7 meter lane. While a motorcyclist typically rides in the left track of the lane, he or she may move to avoid obstacles or debris.

HAVE NO SEATBELTS.

ARE MORE VULNERABLE TO THE WIND, WEATHER AND ROAD CONDITIONS



THE SPORT MOTORCYCLE



THE STREET MOTORCYCLE



THE DUAL SPORT MOTORCYCLE



THE TOURING MOTORCYCLE



SOME MOTORCYCLES HAVE THREE WHEELS



SOME MOTORCYCLES HAVE SIDECARS



SOME MOTORCYCLES TOW TRAILERS